

# dSHIFT by Xavor

## SharePoint Migrator

*"Proven methodology for migration with 0% content loss, just like AIR!"*

**dSHIFT innovates how business value from software integration is delivered by automating robust and flexible enterprise business processes that enhance efficiency and effectiveness between employees, customers and suppliers.**

0 % content loss

Work Remotely

Security





















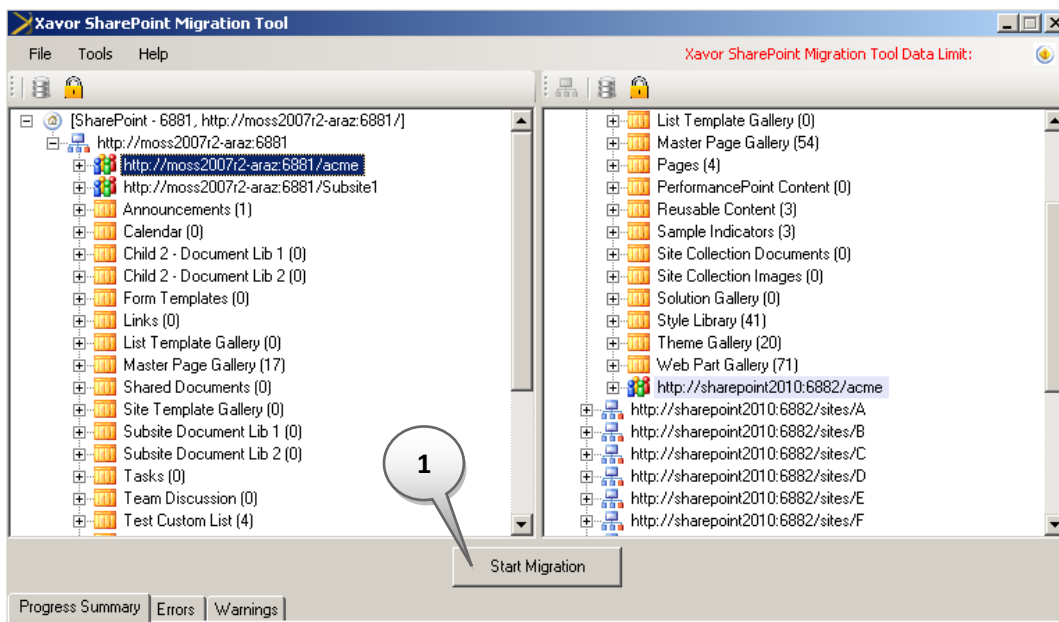






## Start Migration

XSPM starts migration of the data when we click the “Start Migration” button.



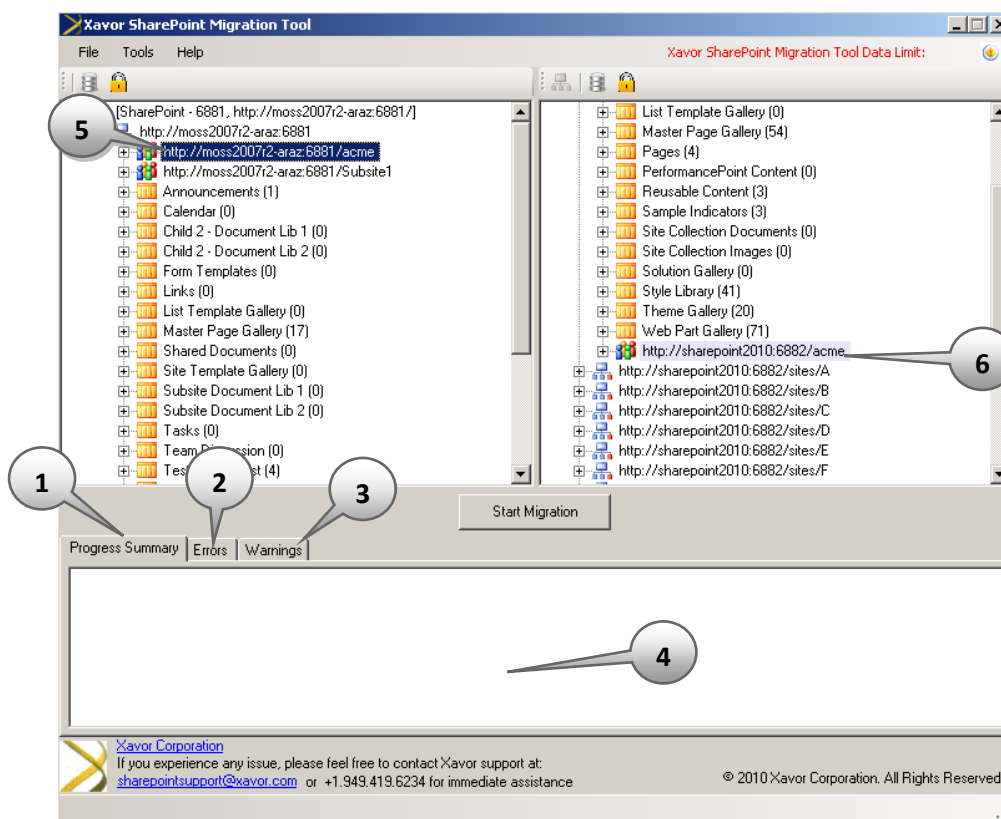
1. Start Migration button.

## Migration execution

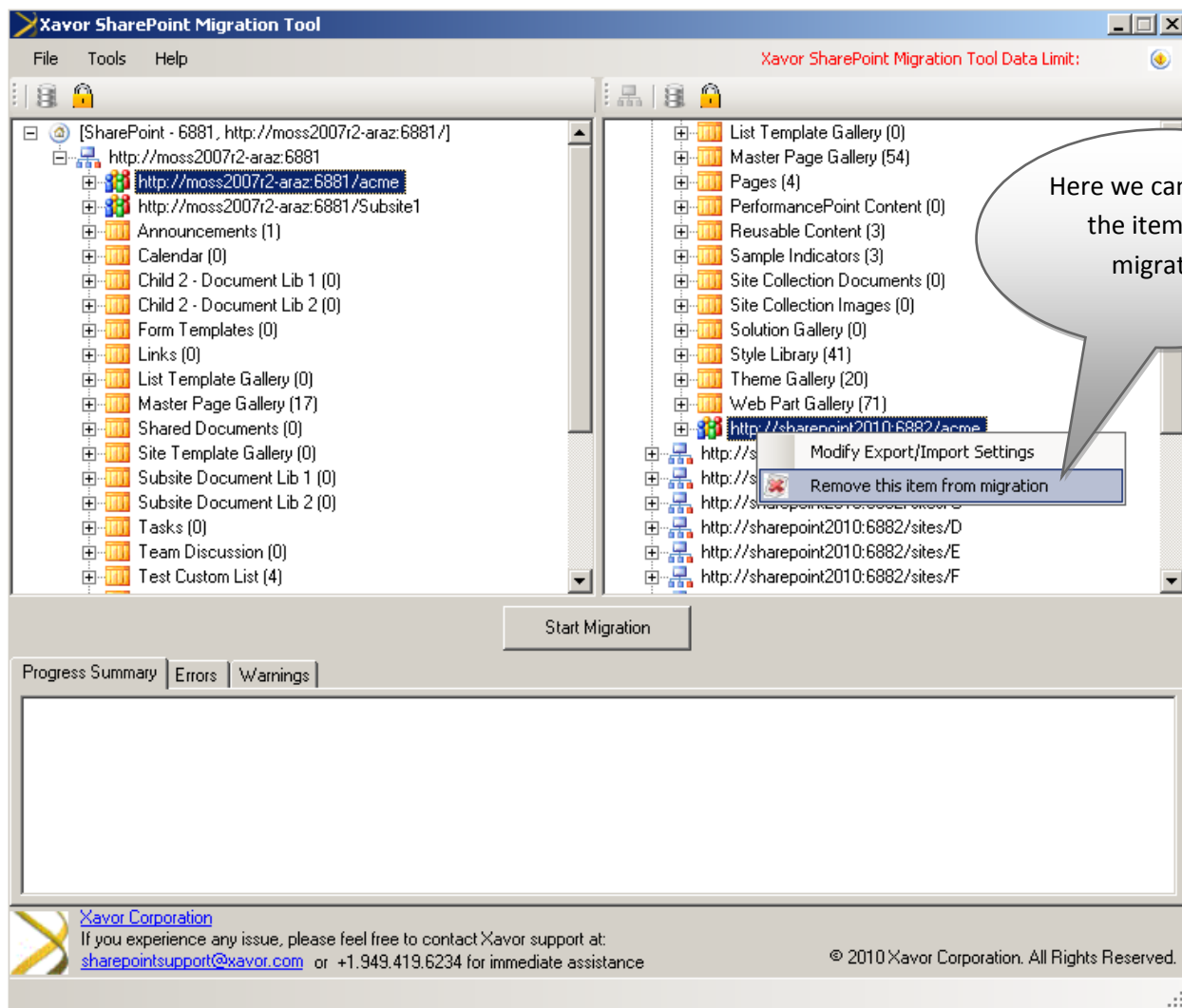
Following are the basic steps involved in the migration process.

- **Export data** to the source SharePoint farm.
- **Copy data** form source to destination SharePoint farm
- **Import data** to destination SharePoint farm

Then after taking a suitable time XSPM completes its process of migration and data is copied to the destination SharePoint farm.

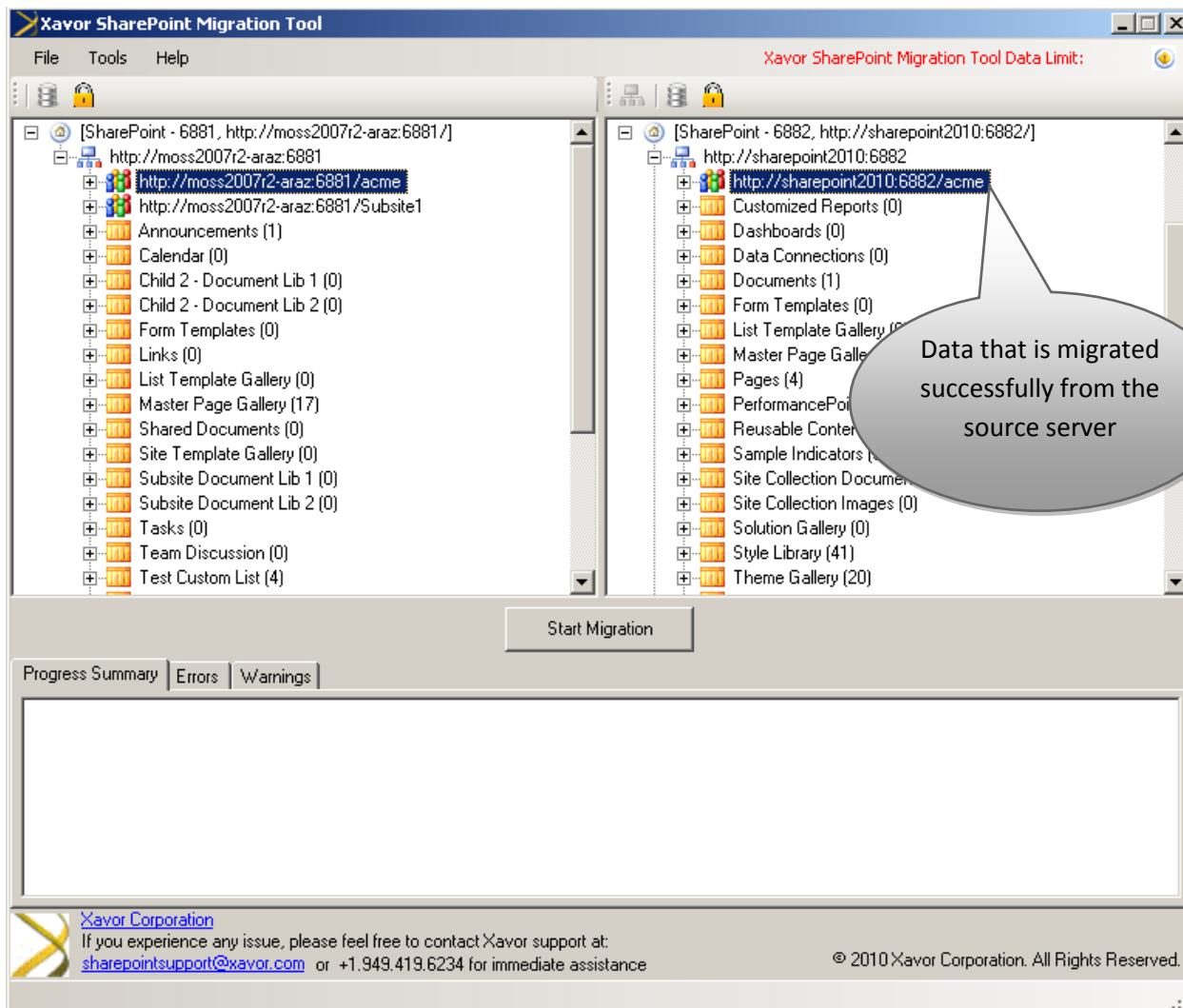


1. Progress summary – Displays the progress of the whole migration process.
2. Errors—Show possible errors in the process.
3. Warnings— any threat or warning is displayed in this tab.
4. Current action of migration process is displayed here.
5. Source site that we want to migrate.
6. List that is place in the destination web application *(Still not migrated yet we can delete it from migration process by right click and selecting “Remove this item from migration”. see image below.*



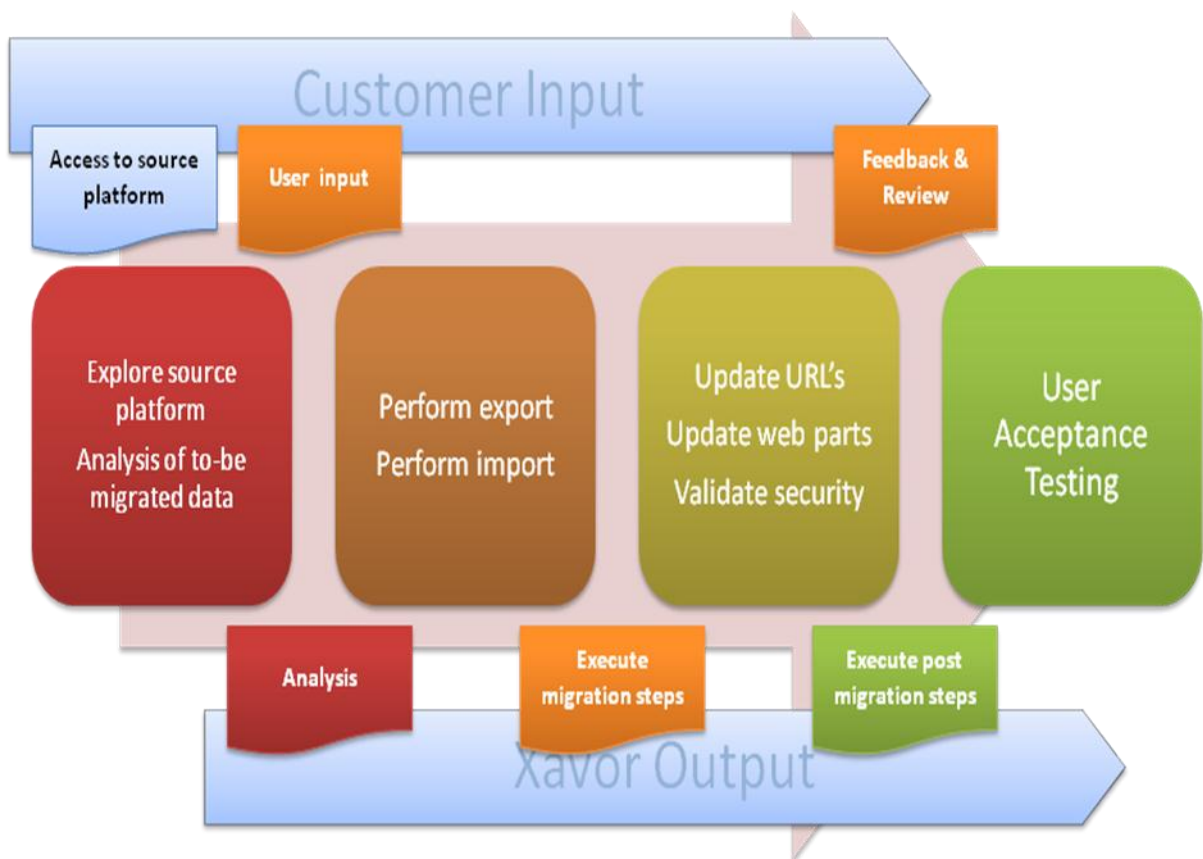
## Completed migration in destination

Following screenshot shows that the migration has been completed successfully and we can verify its content.



## On demand Tailored Customization

Here is the high level process of how Xavor will make sure that migration of your existing SharePoint setup will be done like a breeze. This approach is a proven methodology for migration of terabytes of data for top notch enterprise. XSPM also supports the concept of customization in which user can personalize migration according to his needs and standards. Following diagram enlightens how user can customize and make changes to work in user friendly environment.



Xavor SharePoint Migrator

## SharePoint A Brief Idea

To be very brief, **SharePoint** is an operating system for web. **Microsoft SharePoint**, also known as **Microsoft SharePoint Products and Technologies**, is a collection of **products** and **software** elements that includes, amongst a growing selection of components; Internet Explorer based **collaboration** functions, **process management** modules, search modules and a **document-management platform**. SharePoint can be used to host web sites that access **shared workspaces, information stores** and **documents**, as well as host defined applications such as **wikis** and **blogs**. All users can manipulate proprietary controls called "web parts" or interact with pieces of content such as lists and document libraries.

The term SharePoint can collectively refer to a number of products ranging from the base platform to various services. **WSS** is the platform that includes windows server and services like **MOSS** or **SharePoint 2010** provides **additional functionality and features** and are licensed accordingly. Following diagram illustrates how different workgroups share certain information by different sources to a main centralized server using SharePoint.



# Microsoft Office SharePoint Server (MOSS)

## Features

MOSS has a lot of features and functions, some of the basic functions are:

**Collaboration** Helps to connect teams by providing easy access to the people documents and information users.

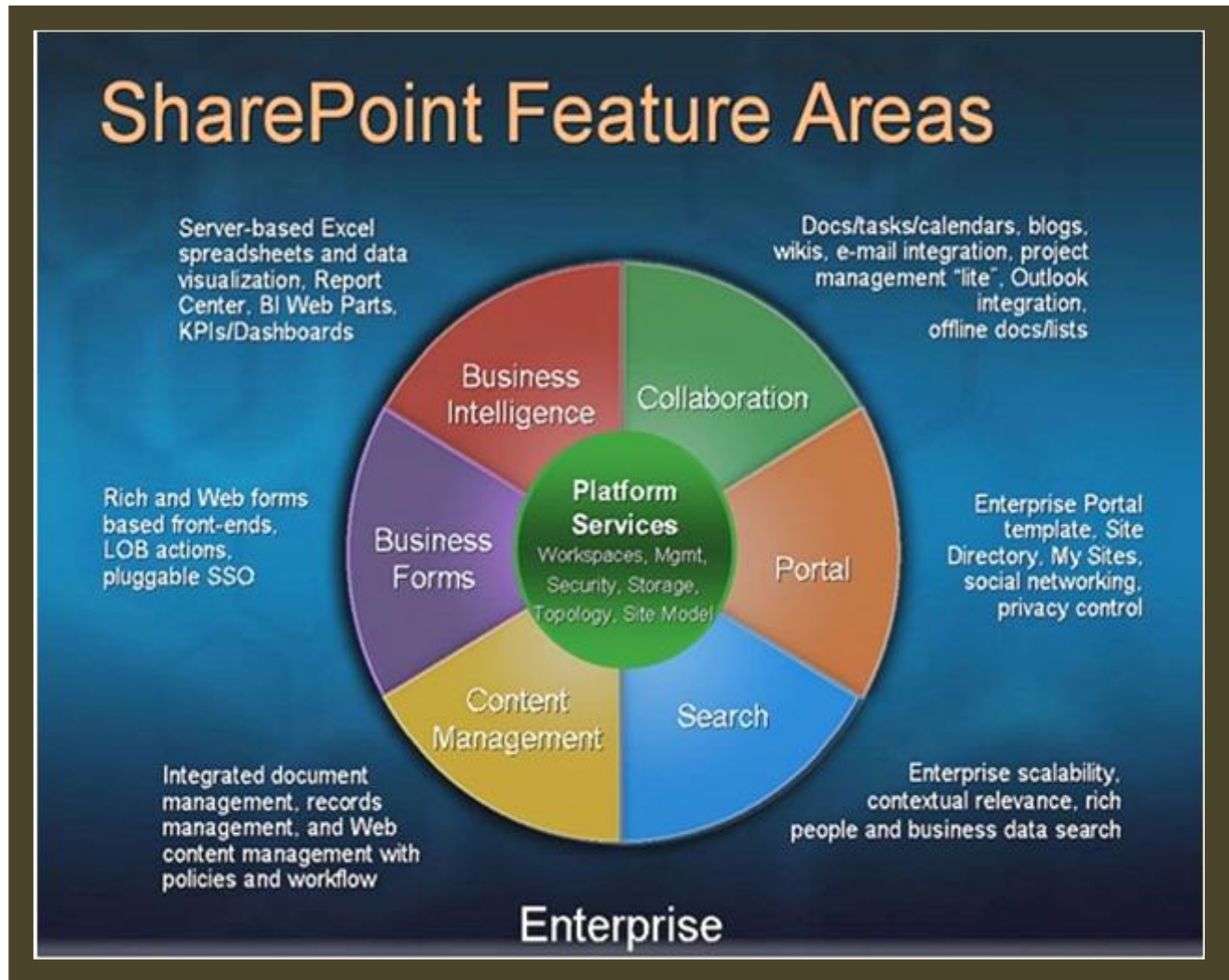
**Enterprise Portal** Useful for designing, deploying, and managing enterprise intranet portals, corporate Internet presence Web sites, and divisional portal sites

**Search** In this technology users can search experts or documents to help them in their work.

**Enterprise Content Management** Manage contents with 100% accuracy.

**Business Intelligence** Provides business intelligence capabilities to every employee so they can share, control and reuse business information in order to make better business decisions.

**Business Processes** SharePoint works on the basis of streamline forms driven business process with easy to use.



[Above diagram is taken from Microsoft website and elaborates different SharePoint feature areas. The diagram perfectly elaborates how each SharePoint feature area works.]

## SharePoint 2010 Features

SharePoint 2010 has a lot of features and functions, some of the basic functions are:

**Sites** The basic capabilities required to use SharePoint sites to engage employees, partners and customers in an effective manner, both inside and outside the firewall.

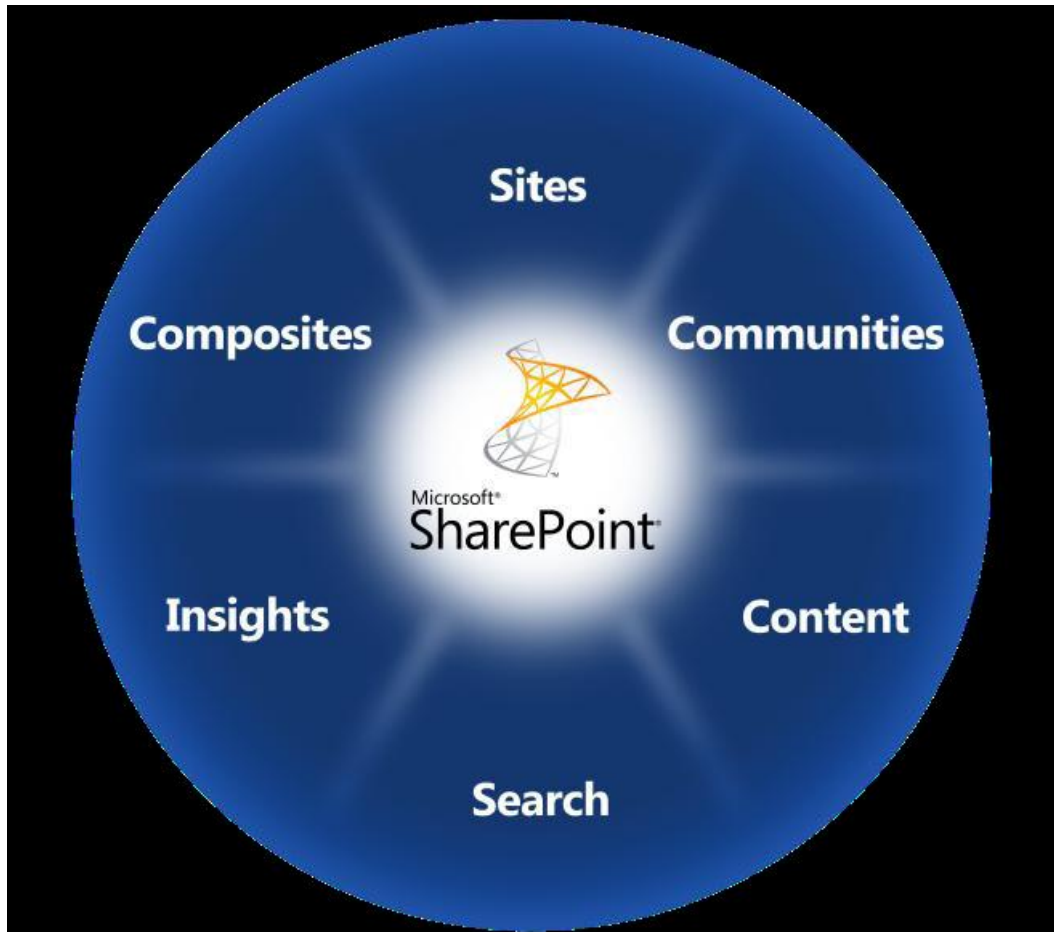
**Communities** The ability to easily access expertise and interact with other people in new and creative ways across the enterprise through both formal and informal networks.

**Content** The facilities for the creation, review, publication and disposal of content while conforming to defined compliance rules, whether the content exists as traditional documents or as Web pages. SharePoint 2010's content-management capabilities include document management, records management, and Web-content management.

**Search** With more content existing online and involving the collaboration of multiple participants, it is critical that people can quickly and easily locate relevant content across SharePoint lists, sites and external systems and data sources, such as file shares, Web sites or line-of-business applications.

**Insights** Information workers need the ability to not only rapidly deliver and share information that is critical to the success of the business but also to turn raw data into actionable conclusions and to drive business results through sharing data-driven analysis.

**Composites** Business users of all roles need the ability to quickly create customized solutions without involving corporate IT in each request. At the same time, the IT staff needs the capability to empower business users to create these applications while ensuring the environment's stability and availability.



*[Above diagram is taken from Microsoft website and elaborates different SharePoint 2010 feature areas. The diagram perfectly elaborates how each SharePoint 2010 feature area works.]*

## Appendix A

### FAQ

#### **What is XSPM?**

Xavor SharePoint Migrator (XSPM) is a one stop solution to migrate data from WSS 3.0 to WSS 3.0, WSS 3.0 to MOSS, WSS 3.0 to SharePoint 2010 and MOSS to SharePoint 2010. This tool can migrate tons of terra bytes of data for top score companies.

#### **Do my previous version history retained after migration?**

Yes, XSPM can perform migration with 0% content loss and can retain version history as well.

#### **XSPM Extensions should be installed on both source and destination servers?**

Yes, XSPM Extensions should be installed on both servers.

#### **Can we remotely perform migrations using XSPM?**








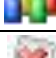



Yes, XSPM architecture supports this that we can perform migrations remotely.

#### **In what time data is migrated from source server to the destination server?**

Well this depends upon the size of the content which is to be migrated to the destination web application. Smaller the size of the content shorter will be the time span of migration.

## Appendix B

### Icons utilized

Icons	Descriptions
	To expand web application list
	Arrow to collapse web application list
	Represents List
	Represents File
	Represents Folder
	Represents Web Application
	Represents Site Collection
	Represents Web
	To delete
	To get the size
	To see User/Group Security